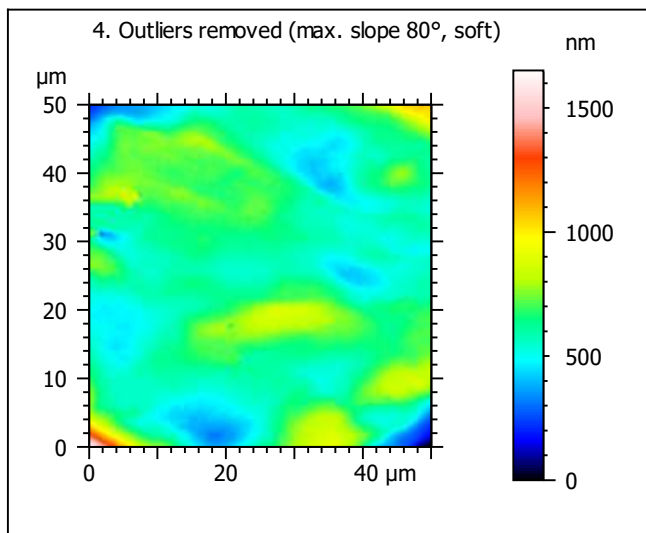
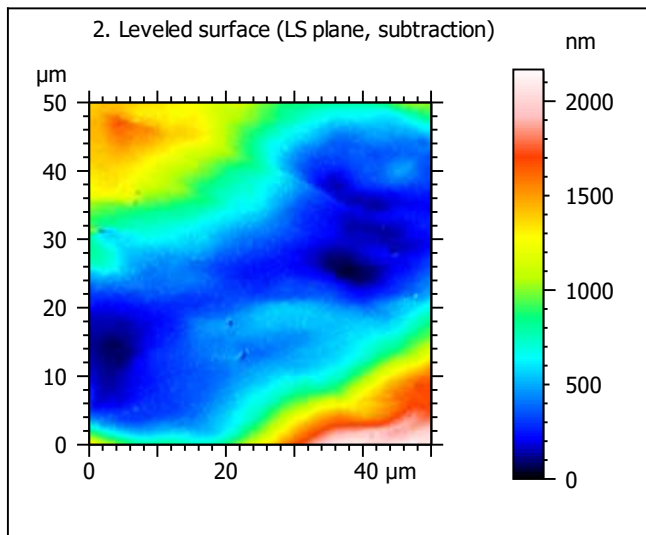
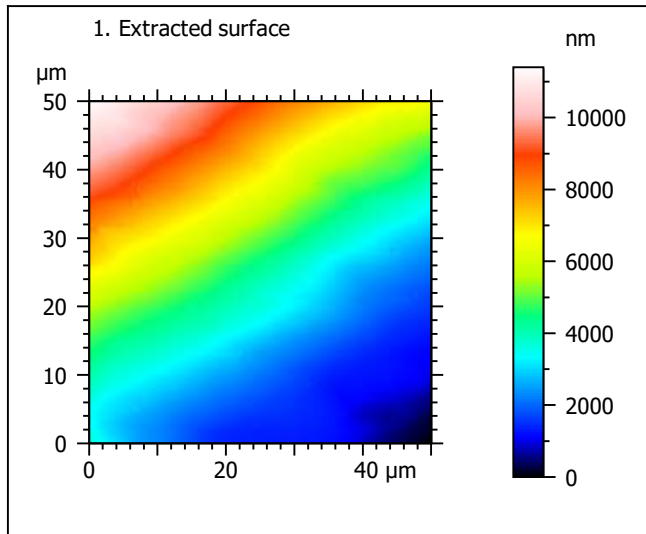
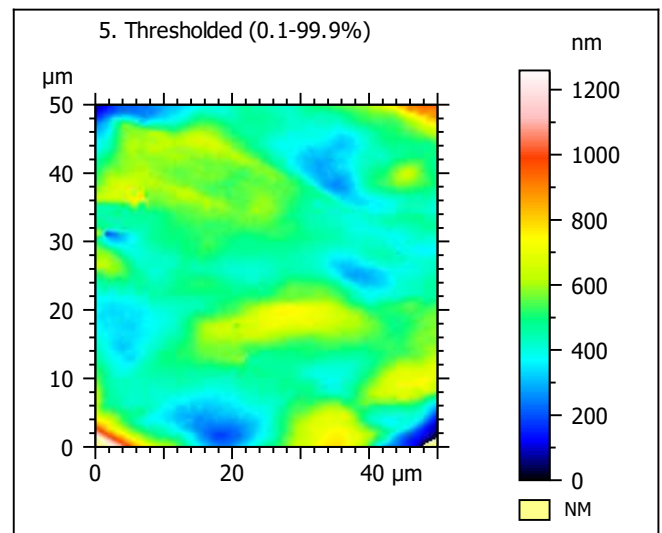
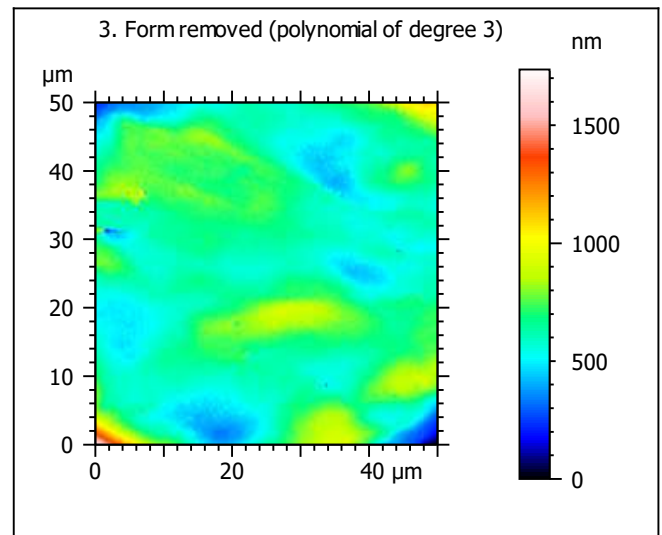


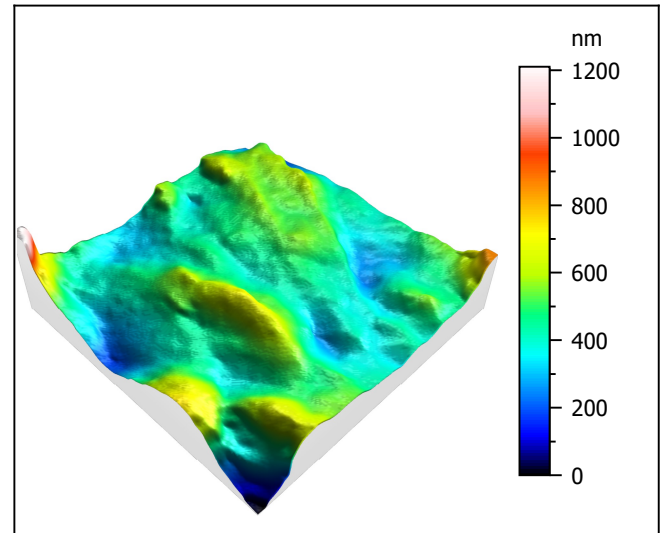
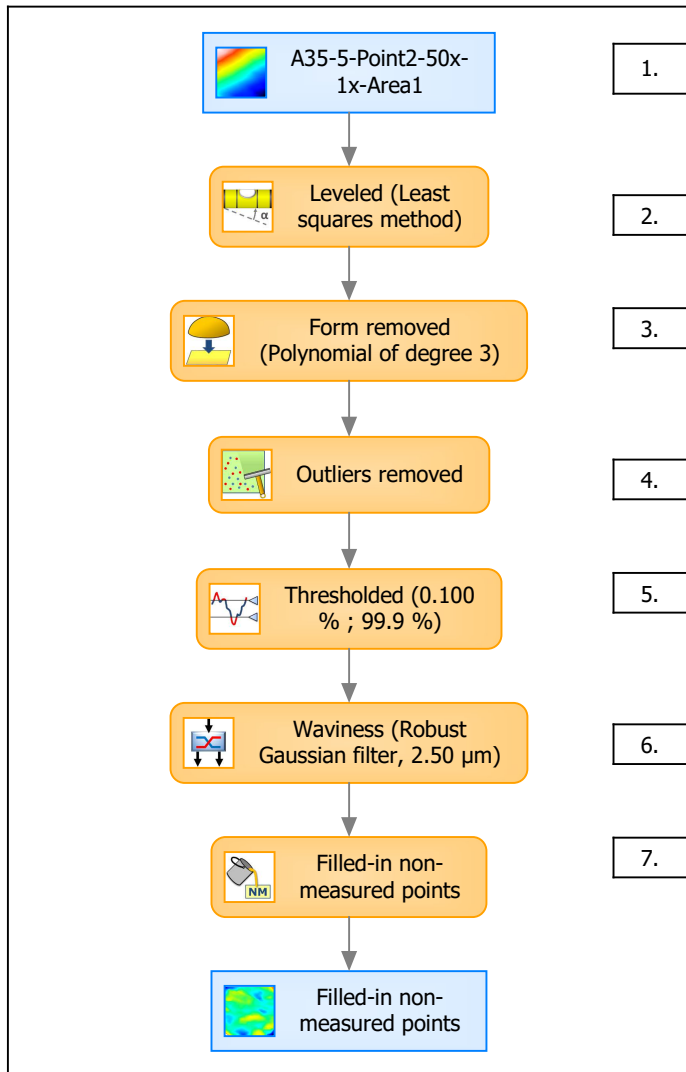
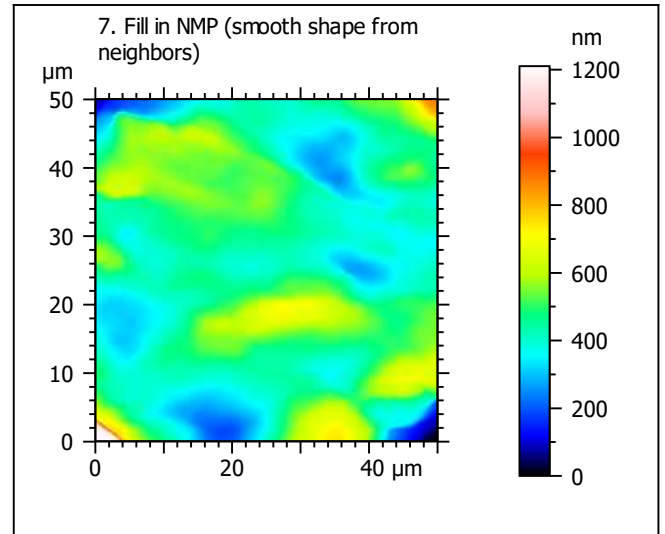
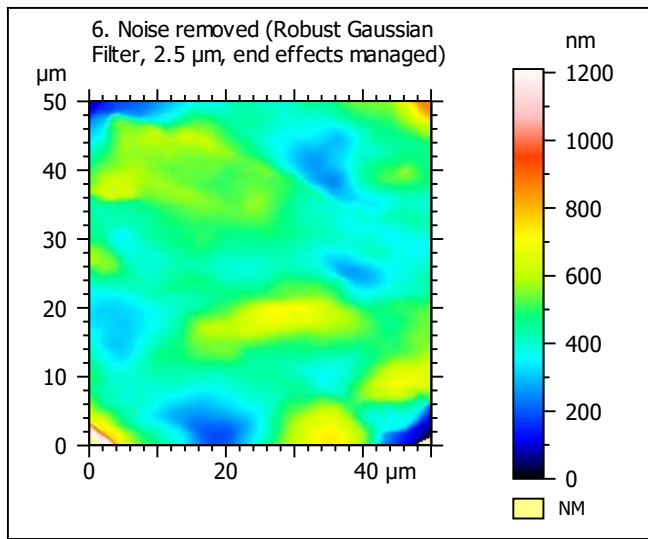
Template to process all extracted 50x50 μm surfaces, acquired with the LEXT 4000 with the 50x/0.95 objective at 1x zoom

A. Processing



| Identity card | | | |
|---------------|--|--------|--|
| Name: | A35-5-Point2-50x-1x-Area1 | | |
| File path: | D:\Data\Anto\...\A35-5-Point2-50x-1x-Area1.sur | | |
| | | | |
| Axis: | X | | |
| Length: | 50.0 | μm | |
| Size: | 201 | points | |
| Spacing: | 0.250 | μm | |
| | | | |
| Axis: | Y | | |
| Length: | 50.0 | μm | |
| Size: | 201 | points | |
| Spacing: | 0.250 | μm | |
| | | | |
| Axis: | Z | | |
| Length: | 11402 | nm | |
| Size: | 4917 | digits | |
| Spacing: | 2.32 | nm | |
| NMP ratio: | 0.00 % (0 Pts) | | |





| Identity card | | | |
|---------------|--|--------|--|
| Name: | A35-5-Point2-50x-1x-Area1 > Levelled (Least... | | |
| | | | |
| Axis: | X | | |
| Length: | 50.0 | μm | |
| Size: | 201 | points | |
| Spacing: | 0.250 | μm | |
| | | | |
| Axis: | Y | | |
| Length: | 50.0 | μm | |
| Size: | 201 | points | |
| Spacing: | 0.250 | μm | |
| | | | |
| Axis: | Z | | |
| Length: | 1210 | nm | |
| Size: | 522 | digits | |
| Spacing: | 2.32 | nm | |
| | | | |
| NMP ratio: | 0.00 % (0 Pts) | | |

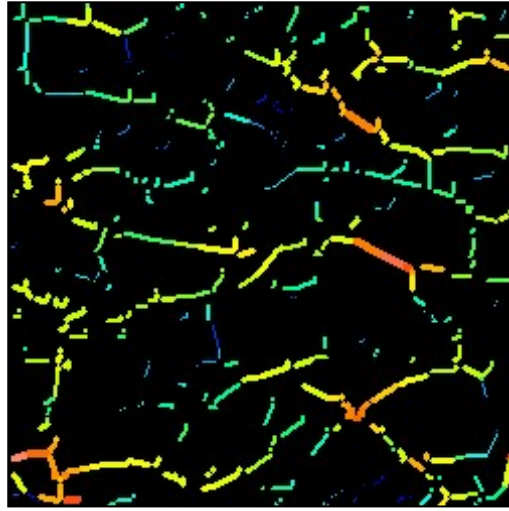
Analyses:
8. ISO 25178
9. Furrow
10. Texture isotropy and direction
11. SSFA

B. Analyses

8. ISO 25178-2 parameters on surface #7

| ISO 25178 | | |
|--------------------------------|---------|----------------------------------|
| Height Parameters | | |
| Sq | 112 | nm |
| Ssk | 0.709 | |
| Sku | 8.14 | |
| Sp | 756 | nm |
| Sv | 454 | nm |
| Sz | 1210 | nm |
| Sa | 83.4 | nm |
| Functional Parameters | | |
| Smr | 98.4 | % |
| Smc | 129 | nm |
| Sxp | 204 | nm |
| Spatial Parameters | | |
| Sal | 4.17 | μm |
| Str | 0.571 | |
| Std | 176 | ° |
| Hybrid Parameters | | |
| Sdq | 0.0505 | |
| Sdr | 0.124 | % |
| Functional Parameters (Volume) | | |
| Vm | 0.00748 | μm ³ /μm ² |
| Vv | 0.137 | μm ³ /μm ² |
| Vmp | 0.00748 | μm ³ /μm ² |
| Vmc | 0.0842 | μm ³ /μm ² |
| Vvc | 0.125 | μm ³ /μm ² |
| Vvv | 0.013 | μm ³ /μm ² |

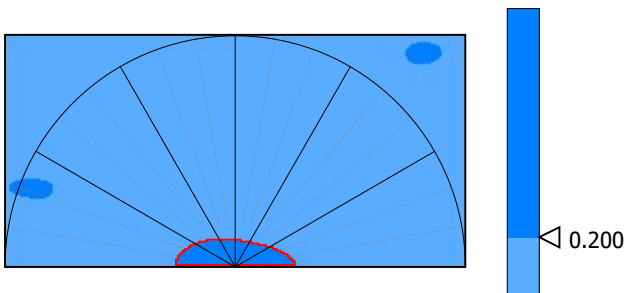
9. Furrow analysis surface #7



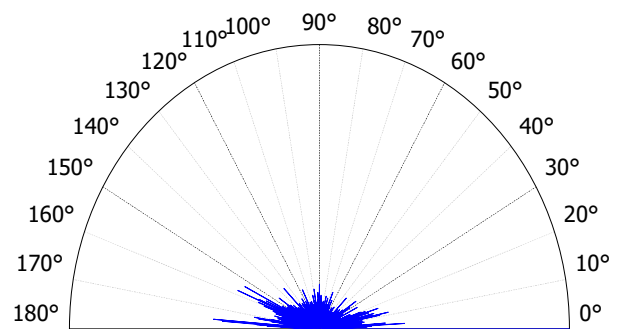
All furrows are shown.

| Parameters | Value | Unit |
|--------------------------|-------|--------|
| Maximum depth of furrows | 203 | nm |
| Mean depth of furrows | 103 | nm |
| Mean density of furrows | 1612 | cm/cm2 |

10. Texture isotropy and direction on surface #7



| Parameters | Value | Unit |
|---------------------|-------|------|
| Isotropy | 41.5 | % |
| Periodicity | 23.5 | % |
| Period | 23.7 | μm |
| Direction of period | 159 | ° |



| Parameters | Value | Unit |
|------------------|-------|------|
| Isotropy | 57.1 | % |
| First Direction | 0.107 | ° |
| Second Direction | 157 | ° |
| Third Direction | 12.0 | ° |

